

# PSGZ PS SERIES

## Deposit safes

Designed to provide a nonreturnable deposit for top drawer and lower safe which can be locked with separate key. It's recommended for convenience stores, gas station, etc.



Passed JIS one hour fire resistant test



Passed TS-15 Tool-proof test  
<PSGZ only>

Paint color [LGW80]



## FEATURES

### Burglary resistant performance \* This tool-proof test belongs to fire resistant safe, not burglary resistant safe.

#### Passed TS-15 Tool-proof test <PSGZ only>

Most of safecrackers attempt "Forced open a safe" by using specific tools like crowbar and metal cutting saw etc. for safe door in a short time. The test is conducted on the assumption of the attacks such as cutting hinges and forced-open the door for 15 minutes.

**Judgment** Safe door can not open and time of attack test is over 15 min.

\* Time of attack does not include the time of preparing and changing tools, learning method of attacks and taking a rest.



### Fire resistant performance

#### Passed JIS one hour fire resistant test

Passed "Standard heating test" in JIS and designed to maintain the inner temperature less than 177°C for one hour after fire.

#### **Judgment** Fire resistant performance for general paper

- The inner temperature limit is less than 177°C.
- Newspaper inside safe does not have appreciable discoloration or deterioration and they are legible.



# LOCK

## Anti-drill Cylinder lock

Equipped with original made Anti-drill cylinder lock  
The keyhole and surface of the lock can withstand the force attack with electric drill and other equipment.



 Anti-drill Cylinder lock  
<PSGZ only>

## Installed re-locking device <PSGZ only>

It will operate automatically if the dial lock is forced-open by tools, and the door will remain firmly closed.

## Automatic locking device <PSGZ, PS-50/PS-50E only>

This is a device to prevent the locking bolt from coming out until you close the door.  
When you turn the handle to open, the stopper works and fix the handle. Then, when you close, the door is locked automatically.



## Combination Lock

This mechanical conventional locking system has been widely used all over the world.



## Digital Lock

### For ER series

5 personal codes of 1-10 digits can be registered.

### For E series

One personal code of 1-10 digits can be registered.

Work with batteries [\[AA battery x 4 pcs.\]](#)

### Security lockout function

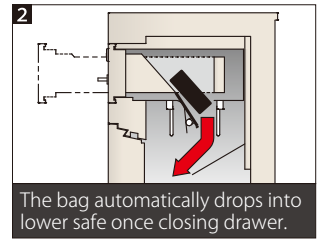
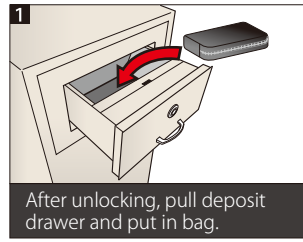
The lock will be frozen for a while when attempting wrong personal code more than 5 times.



# OTHER

## Immediate deposit from top drawer

Once you put valuables in the deposit drawer, they drop into the lower safe which is locked with separate key. So, even while the administrator is absent, it is possible to keep it any time. The model is designed to provide fish resistant structure that prevents the goods taking out from the lower safe.



\* Please do not put in any goods that are larger than slot size.  
 \* We recommend using our optional bag.  
 \* Illustration shows the cross section of PSGZ series. (both the slot of deposit drawer and fish-resistant structure)

### [OPTION] Deposit bag

- ① **NB-30** Big size (with key)  
 Outside Dimensions: W270 x D 190 x H60(mm)  
 For : PSGZ series



- ③ **B-3** Big size  
 Outside Dimensions: W230 x D 135 x H40(mm)  
 For : PS-50 series/PSGZ-100 series/125 series



- ② **NB-21** Small size (with key)  
 Outside Dimensions: W170 x D 120 x H40(mm)  
 For : PS-50 series/PSGZ-100 series/125 series

- ④ **B-2** Small size  
 Outside Dimensions: W165 x D 115 x H40(mm)  
 For : PSGZ/PS series



# LINEUP

PSGZ series  

## Combination Lock

## Digital Lock

\* ER series : 5 codes can be registered



### PSGZ-100

Outside Dimensions:  
W610 x D630 x H1,135(mm)  
Effective inside dimension:  
W450 x D355 x H407(mm)  
Deposit chute size:  
W310 x D90 x H170(mm)  
Weight: 330kg Capacity: 65 ℓ

### PSGZ-125

Outside Dimensions:  
W610 x D630 x H1,295(mm)  
Effective inside dimension:  
W450 x D355 x H567(mm)  
Deposit chute size:  
W310 x D90 x H170(mm)  
Weight: 395kg Capacity: 90.5 ℓ

### PSGZ-100ER

Outside Dimensions:  
W610 x D630 x H1,135(mm)  
Effective inside dimension:  
W450 x D355 x H407(mm)  
Deposit chute size:  
W310 x D90 x H170(mm)  
Weight: 330kg Capacity: 65 ℓ

### PSGZ-125ER

Outside Dimensions:  
W610 x D630 x H1,295(mm)  
Effective inside dimension:  
W450 x D355 x H567(mm)  
Deposit chute size:  
W310 x D90 x H170(mm)  
Weight: 395kg Capacity: 90.5 ℓ

PS series 

## Combination Lock

## Digital Lock

\* E series : one code can be registered



### PS-20

Outside Dimensions:  
W344 x D434 x H783(mm)  
Effective inside dimension:  
W214 x D256 x H354(mm)  
Deposit chute size:  
W180 x D90 x H100(mm)  
Weight: 80kg Capacity: 19.5 ℓ

### PS-50

Outside Dimensions:  
W463 x D526 x H905(mm)  
Effective inside dimension:  
W325 x D336 x H423(mm)  
Deposit chute size:  
W264 x D100 x H100(mm)  
Weight: 130kg Capacity: 46 ℓ

### PS-20E

Outside Dimensions:  
W344 x D430 x H783(mm)  
Effective inside dimension:  
W214 x D256 x H354(mm)  
Deposit chute size:  
W180 x D90 x H100(mm)  
Weight: 80kg Capacity: 19.5 ℓ

### PS-50E

Outside Dimensions:  
W463 x D523 x H905(mm)  
Effective inside dimension:  
W325 x D336 x H423(mm)  
Deposit chute size:  
W264 x D100 x H100(mm)  
Weight: 130kg Capacity: 46 ℓ